



WORKPLACE RAISE-A-THON



Bolton Hospice
caring from the heart



**YOUR
FUNDRAISING
PACK**



WORKPLACE RAISE-A-THON



Please fill in your details:

Forename: Surname:

Address:

Postcode:

giftaid it

If I have ticked the 'Gift Aid? ✓' box, I confirm that I am a UK taxpayer. I have read this statement and want Bolton Hospice to reclaim tax on the donation detailed below, given on the date shown. I understand that if I pay less Income tax and/or Capital Gains tax than the amount of Gift Aid claimed on all of my donations in that tax year it is my responsibility to pay any difference. I understand that Bolton Hospice will claim 25p of tax on every £1 that I have given.

BOOST YOUR DONATION BY 25P OF GIFT AID FOR EVERY £1 YOU DONATE

Remember: You must provide your full name, home address, postcode and tick 'Gift Aid' for Bolton Hospice to claim tax back on your donation.

Full Name	Home address (Full details so we can claim gift aid!)	Postcode	Amount £	Gift Aid? ✓	Date paid
i.e. Joe Bloggs	1 Any Street, Bolton	BL1 4QT	£10	✓	01.09.21
				○	
				○	
				○	
				○	
				○	
				○	
				○	
				○	
				○	
				○	
				○	
				○	
				○	
TOTAL					

Bolton Hospice is a registered charity, number 518704

Cheques payable to: Bolton Hospice. Return to: Fundraising Department, Queens Park Street, Off Chorley New Road, Bolton BL1 4QT. Tel 01204 663055

How your sponsorship helps...

★ **£25** could pay for a bereavement support session, helping families after the death of a loved one.

★ **£46** could pay for essential oxygen for our patients for 2 days.

★ **£103** could pay for a Hospice at Home visit, enabling a patient to be cared for in their own home.



Bolton Hospice
caring from the heart



giftaid it

If I have ticked the 'Gift Aid?' ☒ box, I confirm that I am a UK taxpayer. I have read this statement and want Bolton Hospice to reclaim tax on the donation detailed below, given on the date shown. I understand that if I pay less Income tax and/or Capital Gains tax than the amount of Gift Aid claimed on all of my donations in that tax year it is my responsibility to pay any difference. I understand that Bolton Hospice will claim 25p of tax on every £1 that I have given.

Remember: You must provide your full name, home address, postcode and tick 'Gift Aid' for Bolton Hospice to claim tax back on your donation.

[illegible]

The personal information you have provided to Bolton Hospice will be processed in accordance with current UK data protection legislation and our privacy policy which is available to view at www.boltonhospice.org.uk or upon request. The main purpose for which we process your personal information is to claim gift aid on your donation but for further information please see our privacy policy. Your information will be held securely and we will never sell it to anyone else.

Cheques payable to: Bolton Hospice
Please Return to: Fundraising Department
Queens Park Street
Off Chorley New Road
Bolton
BL1 4QT.
Tel 01204 663055

Bolton Hospice is a registered charity, number 518704

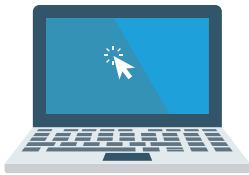


HOW TO SET UP YOUR ONLINE FUNDRAISER

WORKPLACE RAISE-A-THON



facebook

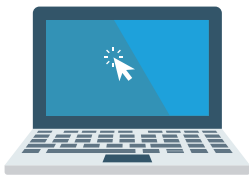


Your fundraiser is now ready to accept donations and to be shared with your friends & family. Facebook will send the money that you raise directly to Bolton Hospice.

Thank you!

- 1 You can find the Fundraisers link in the left menu of your News Feed (the heart coin icon). You may need to click 'See More' on the menu to reveal this option from the list.
- 2 Click the 'Select Charity' button.
- 3 Search for Bolton Hospice and click to select.
- 4 Fill in the details requested, including; how much you are aiming to raise, the date your fundraiser will end, the title of your fundraiser and why you are raising money for Bolton Hospice. Then add a cover photo for your fundraiser.
- 5 Click the 'Create' button when you are ready to publish your fundraiser.

JustGiving™



Your fundraising page is now ready to accept donations and to be shared with your friends & family. JustGiving will send the money that you raise directly to Bolton Hospice.

Thank you!

- 1 Visit www.justgiving.com/campaign/workplace-raise-a-thon and click 'Start Fundraising'.
- 2 Log into your account or create one.
- 3 Select 'Organised event'.
- 4 Select 'Workplace Raise-a-thon'.
- 5 Complete the form to give more information about you and your fundraiser.
- 6 Click 'Create your page'.

FUNDRAISING IDEAS

WORKPLACE RAISE-A-THON



Your Fundraising journey starts here...ideas to get you started.

We hope that some of these ideas inspire you, but don't feel limited to our suggestions! The skies the limit when it comes to fundraising, no idea is too big or too small. Feel free to give us a call on 01204 663065 if you would like to discuss any ideas or for general advice.



Take on a team challenge

Make this year a year to remember and take on a challenge for Bolton Hospice. See our website for a list of local events!



Dress Down Day

A great way to have fun at work. Ask for a donation for people to dress down, dress up or wear fancy dress for the day.



Set up a tuck shop

Everyone loves sweet treats. Stock up on goodies from your local wholesaler and sell on for a profit with your own work tuck shop.



Wine taste test challenge

Test your team to discover who has the most sophisticated palette by putting a selection of unmarked wines in value.



Hire a hall or pitch

The possibilities are endless – throw a work Halloween/Christmas party, open mic night, football tournament or jumble sale.



Raffles & tombolas

Halloween & Christmas are prime times to hold a raffle. A great activity that can also boost fundraising as an extra activity at an event.



Extreme Team challenge

What better way to show your team spirit than to Brave the skies or face Europe's longest zip wire for Bolton Hospice?



Celebrate all things scary

Host a Halloween party, Halloween themed fancy dress at work or pumpkin carving competition for some fundraising fun.



Bake sale

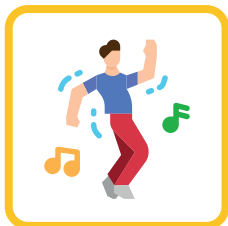
Everyone's favourite! Buy your baking ingredients, get creative and let them eat cake!



Cocktail evening

A great way to entertain and raise vital funds for Bolton Hospice - who could resist a mojito or a gin fizz?

Local challenges – www.boltonhospice.org.uk/take-challenge

**Virtual danceathon to a live zoom class**

Challenge the team while they are working from home and dance together!

**Staff dance routine**

Why not put together your own dance or replicate a famous routine from your team's favourite film e.g. The Greatest Showman

**Run for charity**

Check out our website for a calendar of local runs events at and get signed up with your colleagues.

**One for the bucket list!**

Brave the skies and check out Black Knights Parachute centre at www.bkpc.co.uk

**Guessing games**

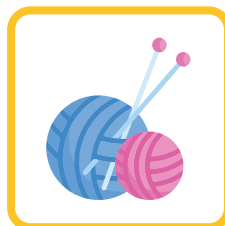
Lucky squares, football squares, name the bear, name the gin or whiskey, guess the weight of the cake and many more.

**Bag it for Bolton Hospice**

Why not have a 'clear out' at home and take your pre-loved items to your workplace for our charity shops team to collect?

**Afternoon tea**

Host your own at work or have them delivered to your friends and families doors to raise funds.

**Get crafty**

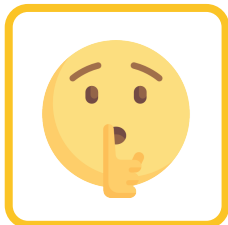
Sell your knitted, crocheted or handmade creations to help raise some funds.

**Grow a beard**

Grow a beard or mustache for sponsorship and share your progress along the way!

**Swap shirts**

Wear your friends rival football, rugby or another teams shirt for the day.

**Sponsored silence**

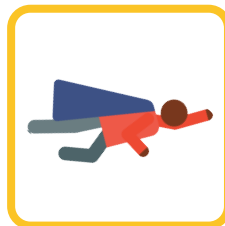
Keep quiet for a work day or even 24 hours to raise funds.

**Climb a mountain**

Choose your challenge and set out with colleagues to reach the summit for Bolton Hospice!

**Cycle challenge**

Set yourself a distance and complete your challenge in a day, few days or month. You could even split the miles between the team!

**Zip wire**

Dare you face Europe's longest Zip Wire? Fly over Penrhyn Quarry to raise sponsorship at www.zipworld.co.uk

Challenges – www.boltonhospice.org.uk/take-challenge

HOW TO PAY IN YOUR DONATION

WORKPLACE RAISE-A-THON



JustGiving™



JustGiving/Facebook Fundraiser

If you have set up a JustGiving or Facebook Fundraiser page all your online donations will automatically come straight to us.



By Cash

You are welcome to bring your cash donations in to us at our Fundraising department based in Giles House at the hospice, which is open from 10am-4pm on weekdays. Please be aware that our opening hours are subject to change.



By Cheque

Cheques should be addressed to Bolton Hospice and sent to:

**Bolton Hospice,
Queens park Street,
Off Chorley New Road,
Bolton
BL1 4QT**



By Card

Payments can also be made using a debit/credit card.
Please call the Fundraising department on 01204 663055



Donate Online

You can pay money from your fundraiser in through the Online Donation page on our website - www.boltonhospice.org.uk/one-off-donation
Please select 'Workplace Raise-a-thon' from the list when making your online donation.

Gift Aid

Gift Aid allows us to reclaim tax on donations made by UK taxpayers. This means that for every £1 donated, Bolton Hospice may be able to claim an additional 25p from the Government. Ask your supporters to tick the Gift Aid option on your sponsorship form or when donating online. If you will be collecting donations please ask us for Gift Aid envelopes.

giftaid it



WE'RE FUNDRAISING FOR...

WORKPLACE RAISE-A-THON



Bolton Hospice
caring from the heart



DATE:
LOCATION:

TIME:

Visit www.boltonhospice.org.uk
to find out how your support helps local people
facing life-limiting illnesses

WORKPLACE RAISE-A-THON



**CREATE YOUR
OWN BUNTING!**

**Print, cut and create your own
Workplace Raise-a-thon bunting
to add some decoration to your
fundraising events & activities!**

Bolton Hospice
caring from the heart
Registered Charity No. 518704.



Proudly supporting

TARGET-O-METER

Colour in each section of the target-o-meter as you fundraise and aim to hit your Raise-a-thon goal.

WORKPLACE RAISE-A-THON



£36,000



Could pay for a patient to stay for 3 months on our Inpatient Unit.

£5,150



Could pay for 50 Hospice at Home nursing visits to patients who want to be at home at the end of their life.

£1,000



Could pay for vital oxygen for all of our patients for two months.

£400



Could pay for a patient to stay a night on our Inpatient Unit.

£12,000



Could pay for a patient to stay for a month on our Inpatient Unit.

£3,700



Could pay for all of our patients' meals for a whole month.

£600



Could pay for the upkeep of our beautiful Garden of Tranquility at the hospice for a year.

**THANK YOU FOR
YOUR SUPPORT!**