

BOLTON HOSPICE NEWS

Autumn | Winter 2025

IN THIS
ISSUE:

CREATING
CHERISHED
MEMORIES:
PAGES 4-5



CHRISTMAS IS
COMING!
PAGE 10



LET YOUR LOVE
SHINE BRIGHT
PAGES 6-7



www.boltonhospice.org.uk



Bolton Hospice
caring from the heart

Looking for the perfect gift?



PLAYING FOR A REASON

Starting at just £10, these vouchers provide your loved ones with the opportunity to win 37 weekly cash prizes, including the top prize of £1,000 & the chance to win up to £10,000 with our new rollover prize!

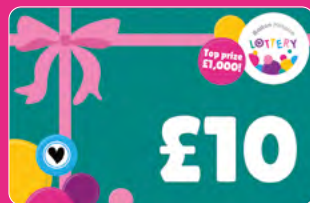
Every gift voucher purchased helps Bolton Hospice continue to care for families when they need us most.



£50 – Entries for 25 weeks



£20 – Entries for 10 weeks



£10 – Entries for 5 weeks

**A perfect gift for Christmas,
special occasions or simply to say
thank you!**

BUY HERE



Please note gift vouchers are only redeemable for persons over 18 and have a 6 month expiry date from the date of purchase. Any voucher not redeemed within 6 months will be treated as a donation.

BeGambleAware.org



Please play responsibly. For practical help and support on problem gambling please visit www.begambleaware.org or call their helpline on **0808 8020 133**.

Registered Charity No. 518704



Registered with
**FUNDRAISING
REGULATOR**

HELLO

It's a privilege to be Chair of Bolton Hospice, and my heart is full of gratitude as I reflect on the incredible support you, our wonderful community, have shown Bolton Hospice over the past year.

Your generosity is the very cornerstone of our ability to provide compassionate care to our patients and their families.

This edition of **Bolton Hospice News** is brimming with stories that showcase the profound impact of your kindness.

You'll read about how, thanks to several generous and unexpected Gifts in Wills, we've been able to reduce our deficit. While financial pressures still remain, these gifts have enabled us to continue creating cherished moments for families – the joy of a beautiful wedding, the excitement of birthdays celebrated with loved ones at the wellbeing hub, and the significance of a special anniversary marked here at the hospice – all made possible because of you.

We'll also share details of our upcoming **Light Up a Life** appeal, a truly moving way to remember loved ones, and highlight the many ways you can get involved in our **Christmas fundraising** activities.

We cannot shy away from the financial challenges that this year has brought, impacting hospices nationwide. We continue to advocate tirelessly for a fairer funding deal for hospices, to ensure that everyone in Bolton can access the specialist palliative care we provide.

With your continued support, and a hopeful eye to the future, I know we can overcome these hurdles together. Thank you, from the bottom of my heart, for being part of our hospice family.

Yours sincerely,

Judith



IN THIS ISSUE

Funding our Future	4-5	Become a hospice volunteer	9
Join our Light up a Life Appeal	6-7	Christmas is coming!	10
Shop with us	8	Upcoming events	11

Bolton Hospice,
Queens Park Street, Bolton, BL1 4QT

Tel: 01204 663 066 **Web:** www.boltonhospice.org.uk

General Enquiries: admin@boltonhospice.org

Fundraising Enquiries: fundraising@boltonhospice.org

CONTACT US



Funding our Future



As a local independent charity, Bolton Hospice must raise over £5 million every year to provide its specialist services free of charge. Government funding covers only a fraction of our running costs, so your support makes all the difference.

Thanks to several unexpected and generous gifts left in supporters' wills, our projected deficit for this year has reduced from £700,000 to £500,000. This vital support from gifts in wills enables us to support local families when they need it most.

Following a lifetime of support to charities, Bolton Hospice supporter Sigried kindly gifted £6,000 in her will to Bolton Hospice. This gift continues to help local families in Bolton access the care they need and deserve.

"She wanted to do this because she wanted to keep on giving to others and she knew that it was donations that kept the hospice going. It means our mum's story is not ending. It just goes on, living through the wonderful work the hospice does for local people."

- Sigried's Daughter, Jacqui

The services we provide are only possible because of people like Sigried, and the many others who have chosen to leave a gift in their will to support hospice care long after they are gone. These extraordinary legacies help us provide specialist care to 1 in 5 of our patients each year, and help families create cherished memories.

CREATING CHERISHED MEMORIES AT BOLTON HOSPICE

Over the past few months, we have had the privilege to witness the joy of a beautiful wedding celebrated here, the excitement of birthdays enjoyed with family at the wellbeing hub, and the significance of a special anniversary – all made possible because of your kind support.

The hospice sector continues to face a funding crisis driven by the cost-of-living crisis, keeping pace with NHS pay rises, and years of underfunded government contributions.

Last year, the Government announced one-off capital funding for hospices to ease the financial pressure hospices are facing. This one-off capital boost is gratefully received and will enable us to prioritise capital projects such as essential upgrades to the hospice site and digital infrastructure that will directly benefit the quality and efficiency of patient care.

1 in 5
of our patients
is cared for by
Gifts in Wills

"While this capital funding is a fantastic step forward, it's crucial to clarify that it does not address our ongoing running costs deficit. A half a million-pound shortfall still clearly represents an unsustainable financial position, and rectifying this remains our priority. To truly secure the future of our vital services and ensure we can plan effectively, we urgently need a long-term, sustainable funding solution for our day-to-day operations."

We'd like to thank YOU, our incredible community, for your unwavering support during these challenging times. Your kind support continues to make a huge difference, enabling us to continue caring from the heart when local people need it most. Thank you!

**Find out more about how you
can support Bolton Hospice**



*Celebrating a birthday at
the Wellbeing Hub*

A beautiful wedding

Special anniversary



Light Up A Life

Remembering with love this winter

This winter, we warmly invite you to be part of our Light up a Life appeal – a time to honour and celebrate the memory of someone close to your heart.

By dedicating a light, you'll receive a personalised keepsake card and have your loved one's name included in our Book of Dedication.

If you prefer to make your dedication online, you're welcome to share a personal tribute – alongside a message or photo – on our **online dedication page**, a dedicated space where loved ones are thoughtfully remembered.

Your loved one's light will shine brightly this Christmas, gently filling the season with love, reflection, and togetherness. It's a chance to pause and remember, while supporting others who need care and comfort.



Every dedication helps us provide compassionate care to those facing life-limiting illnesses, and support to families when it matters most. Together, we can make a real difference.

“Without the hospice I have no idea how we would have coped as a family in December and I will be forever grateful for all the love, care and support they provided us all with for those 4 days until my lovely mum passed away.**”**

How your donation will help



£32

Could help a family create lasting memories this Christmas surrounded by the ones they love.



£56

Could pay for compassionate care for a patient when they need it most.



£127

Could pay for a visit from our specialist Hospice at Home nurses.

We warmly invite you to join us at our Light up a Life events. Let's come together this Christmas to remember those we miss, and to celebrate lives that continue to touch ours.



**6:30PM
AT
BOLTON
HOSPICE**

A heartfelt service under the stars, with cherished carols and special readings. Please be aware that the hospice service is an outdoor event, with no seating.



**7:00PM
AT
BOLTON
PARISH CHURCH**

Come together in the warmth of Bolton's Parish Church. With live music, piano-accompanied carols and heartfelt readings, we take a moment to honour and remember our loved ones.



**Dedicate
a light**



SHOP WITH HEART

Our Charity Shops & Café

Step into one of our charity shops and discover pre-loved gems, stylish bargains, and seasonal favourites – including our much-loved Christmas cards and calendars!

Your shopping helps more than just your wardrobe – it helps fund expert care, comfort, and dignity for local people facing life-limiting illness. Each donated item sold gives second life to your belongings and supports our vital work.



We have 10 fantastic charity shops located across the borough

- Astley Bridge
- Bolton Town Centre – Newport Street
- Bury Road
- Chorley Old Road
- Farnworth clearance shop
- Furniture Plus
- Horwich
- Little Lever
- Tonge Moor Road
- Westhoughton

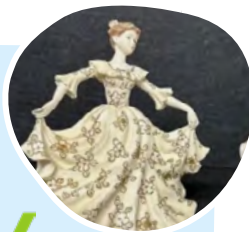
Beyond the High Street

Prefer to browse from the comfort of home?
Or looking for a collectible or special item?
Make sure you keep an eye on our eBay page –
where one-of-a-kind treasures raise funds for services
that matter.

Discover
more



ebay



For information on opening hours please visit here or follow our Facebook page for updates.



Discover Affordable Furniture

Discover incredible value and variety at Furniture Plus. From home and garden furniture to nursery pieces, electrical goods, white goods, and even fitness and leisure equipment – you'll find something useful for every need.



Fresh Food & Friendly Faces

Pop into our Old Bank Café – open six days a week – for a warm welcome and a delicious treat! Whether you're after a fresh breakfast, a light lunch, or just fancy a slice of homemade cake with your speciality tea or coffee, we've got you covered.



Our shops are on Facebook!



Follow our Bolton Hospice Shops Facebook page to be the first to hear about star buys, managers' specials, and exclusive sales and offers.

VOLUNTEER WITH BOLTON HOSPICE

Make a difference today

Volunteers are at the heart of Bolton Hospice. From offering compassionate care to supporting our charity shops, we simply couldn't do what we do without the incredible people who give their time so generously.

It's also a great opportunity to learn new skills, build confidence, and make lasting friendships.

We offer a wide range of volunteer roles, with full training and support provided. Whether you have a few hours a week or more time to give, there's a place for you at Bolton Hospice. Join our team of dedicated volunteers and help us make every moment count.

“

It's an absolute pleasure being a volunteer for Bolton Hospice. I've grown in confidence and made a lot of friends. It's changed my life in so many ways.

”



Interested in volunteering? Visit here or scan the QR code for more information:

www.boltonhospice.org.uk/volunteer



UPCOMING EVENTS & Dates for your diary

CHRISTMAS IS COMING!

Visit here
for more
information on
all of our events



Spread some cheer and take part in some festive fundraising

CHRISTMAS FAIR AND SANTA'S GROTTO

22nd November 2025, from 10am. Free entry.

The Albert Halls, Victoria Square, Bolton BL1 1RU.

JOIN US FOR A FABULOUSLY FESTIVE DAY OUT

- Artisan Stalls • Delicious Food & Drink
- Festive entertainment
- Meet Father Christmas and receive a special gift (ticket required).

Purchase your tickets to meet Father Christmas



CHRISTMAS TREE COLLECTION 6th & 7th January

We'll take the hassle out of your Christmas clean up and collect your tree for a suggested donation of £15.

Bookings opening in early December!



LOTTERY GIFT CARDS

After Christmas gift ideas? Our lottery gift cards are the perfect choice for Christmas. Starting at just £10, these vouchers provide your loved ones with the opportunity to win 37 weekly cash prizes, including the top prize of £1,000 & the chance to win up to £10,000 with our new rollover prize!



CHRISTMAS CARDS AND CALENDARS

Our Christmas cards and gifts are available throughout our charity shops, at our Wellbeing Hub gift shop and to buy online at:

www.boltonhospice.org.uk/shop



JOLLY JUMPER DAY

Thurs 18th December

Can you join our Jolly Jumper day?

Why not dig out your favourite festive knit and join us on our Jolly Jumper Day, or choose a date which best suits you. Ask your staff, school or workplace to wear their jolliest Christmas jumpers in return for a small donation to the hospice this December!



REINDEER RUN Throughout December

One for the little ones! Get your school, nursery and clubs involved! We will supply reindeer ears for the little ones to wear as they run, jump and prance around in a festive fun run!

62 MILES IN OCTOBER

Throughout October

Turn over a new leaf and join our Autumn challenge.



Light Up A Life

**WEDNESDAY 3RD
DECEMBER, 6:30PM**

Bolton Hospice

(This is an outdoor event, with no seating available)

**WEDNESDAY 10TH
DECEMBER, 1:00PM**

Bolton Parish Church

FIRE AND ICE

1st November 2025

Experience the thrill of a fire walk with the invigorating experience of a cold water dip. Choose to do either Fire or Ice - or take on both for the full experience.



STRICTLY LEARN TO DANCE 27th March

Now recruiting for dancers to take part in Strictly Learn to Dance 2026! Each couple will receive 12 lessons, leading up to the Grand Finale!

CHRISTMAS DRAW Coming Soon!

Keep your eyes peeled for something special this Christmas – will you get a Golden Ticket?

WHAT'S ON AT THE WELLBEING HUB

STORY HUB 11am–12pm on Tuesdays

MEMORY CAFÉ 4th Friday of every month, 1.30pm–3pm

SINGING FOR LUNG HEALTH 10.30am–11.30am on Thursdays

MND SUPPORT GROUP 3rd Friday of every month, 10am–2pm

MEN'S GROUP 1st Friday of every month, 10am–12pm

There are lots more services and sessions to get involved with, including outpatient clinics, support groups, creative workshops and special events. Or drop in 10am-3pm, Tuesday-Thursday for specialist advice, or simply a brew & a chat! Find out more & how to self-refer.





Bolton Hospice
caring from the heart

Christmas Draw 2025

Plus Golden
Ticket Draw!

Coming soon!

This year we're adding an exciting **golden ticket** twist, with fabulous prizes for the lucky winners.

Stay tuned for more details on how to get your tickets!



@boltonhospice



Registered charity, no. 518704
BeGambleAware.org

You must be 18 or over to play or claim a prize.